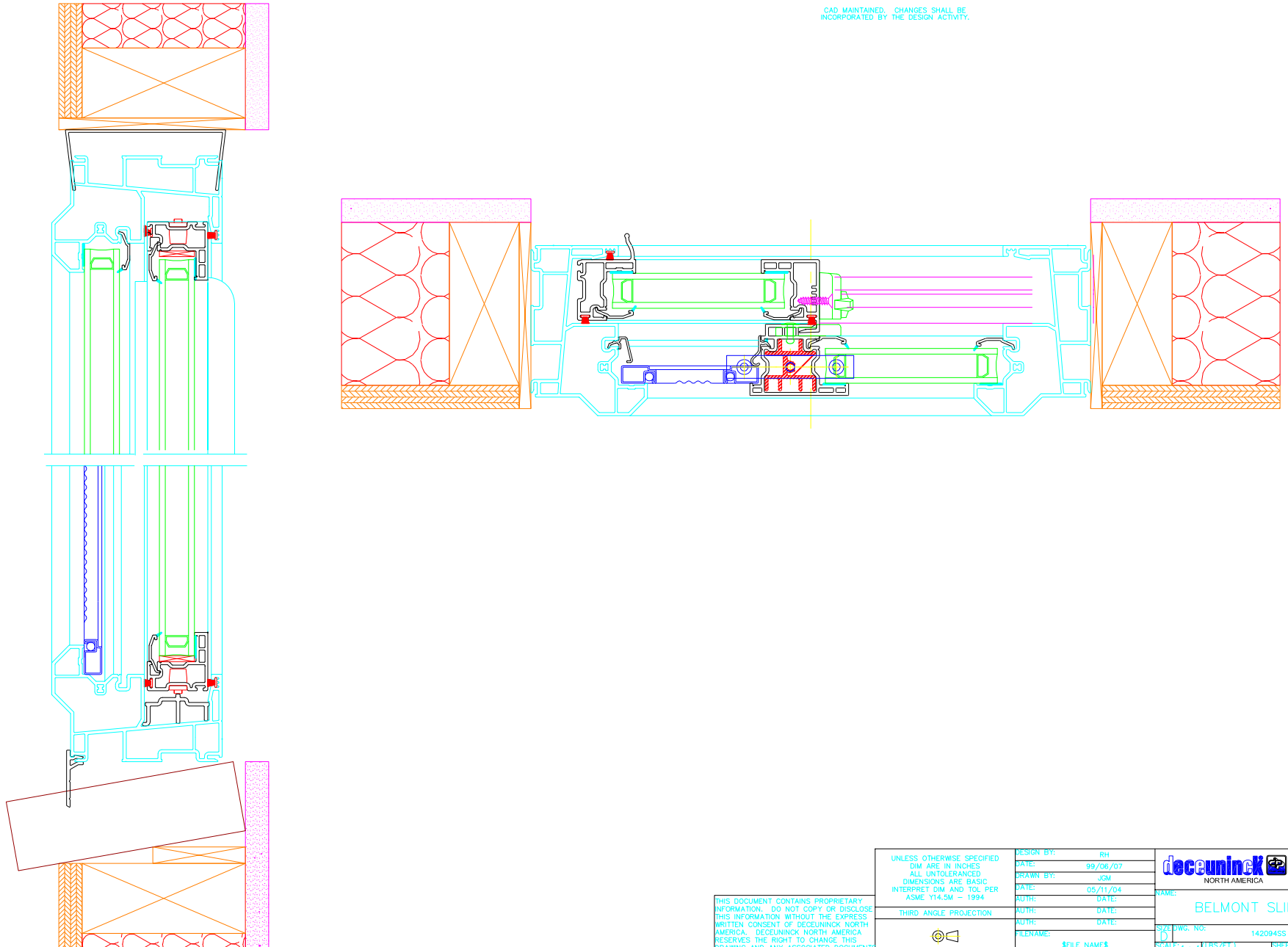


CAD MAINTAINED. CHANGES SHALL BE INCORPORATED BY THE DESIGN ACTIVITY.



THIS DOCUMENT CONTAINS PROPRIETARY INFORMATION. DO NOT COPY OR DISCLOSE THIS INFORMATION WITHOUT THE EXPRESS WRITTEN CONSENT OF DECEUNINCK NORTH AMERICA. DECEUNINCK NORTH AMERICA RESERVES THE RIGHT TO CHANGE THIS DRAWING AND ANY ASSOCIATED DOCUMENTS.

UNLESS OTHERWISE SPECIFIED
DIM ARE IN INCHES
ALL UNTOLERANCED
DIMENSIONS ARE BASIC
INTERPRET DIM AND TOL PER
ASME Y14.5M - 1994

THIRD ANGLE PROJECTION

| | |
|------------|----------------|
| DESIGN BY: | RH |
| DATE: | 99/06/07 |
| DRAWN BY: | JJM |
| DATE: | 05/11/04 |
| AUTH: | DATE: |
| AUTH: | DATE: |
| AUTH: | DATE: |
| FILENAME: | \$FILE NAMES\$ |

| | |
|---|--------------|
|  <small>© COPYRIGHT 2004 DECEUNINCK NORTH AMERICA WILKON, OH 44195</small> | |
| NAME: BELMONT SLIDER | |
| SIZE | 142094SS |
| SCALE: 1 : 1 (LBS/FT.) | SHEET 1 OF 1 |

REV. NEW